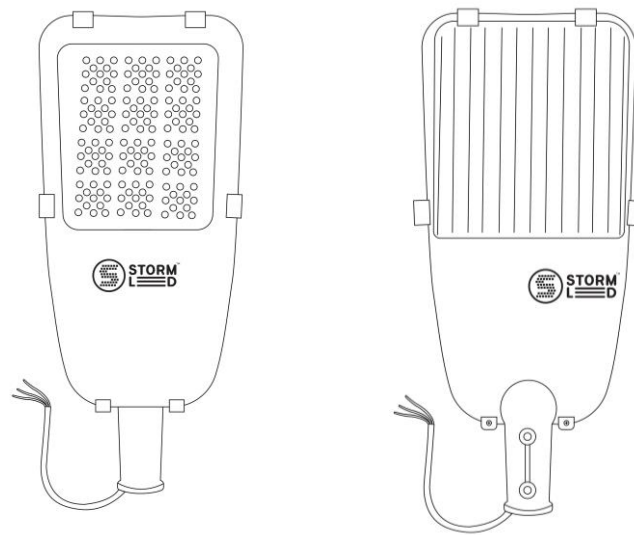


# LED STREET LIGHT INSTALATION GUIDE



Voltage	AC 100 – 277 V
Protection Class	Class I
Power Factor	>0.95
Operating Temp	-40°C ~ 60°C
Housing	DIA CAST Aluminum
Housing Color	Dark Gray
IP rating	IP66
IK rating	IK08
Lifetime span @ 25°C	> 50,000 h
Warranty	3 years



Model	Nominal Wattage W	Fixture Dimensions mm	Fixture Weight Kg
SOM-SL-PL-02-100W	100	541*258	3.3
SOM-SL-PL-03-150W	150	663*284	4.2
SOM-SL-PL-04-200W	200	718*302	6.76

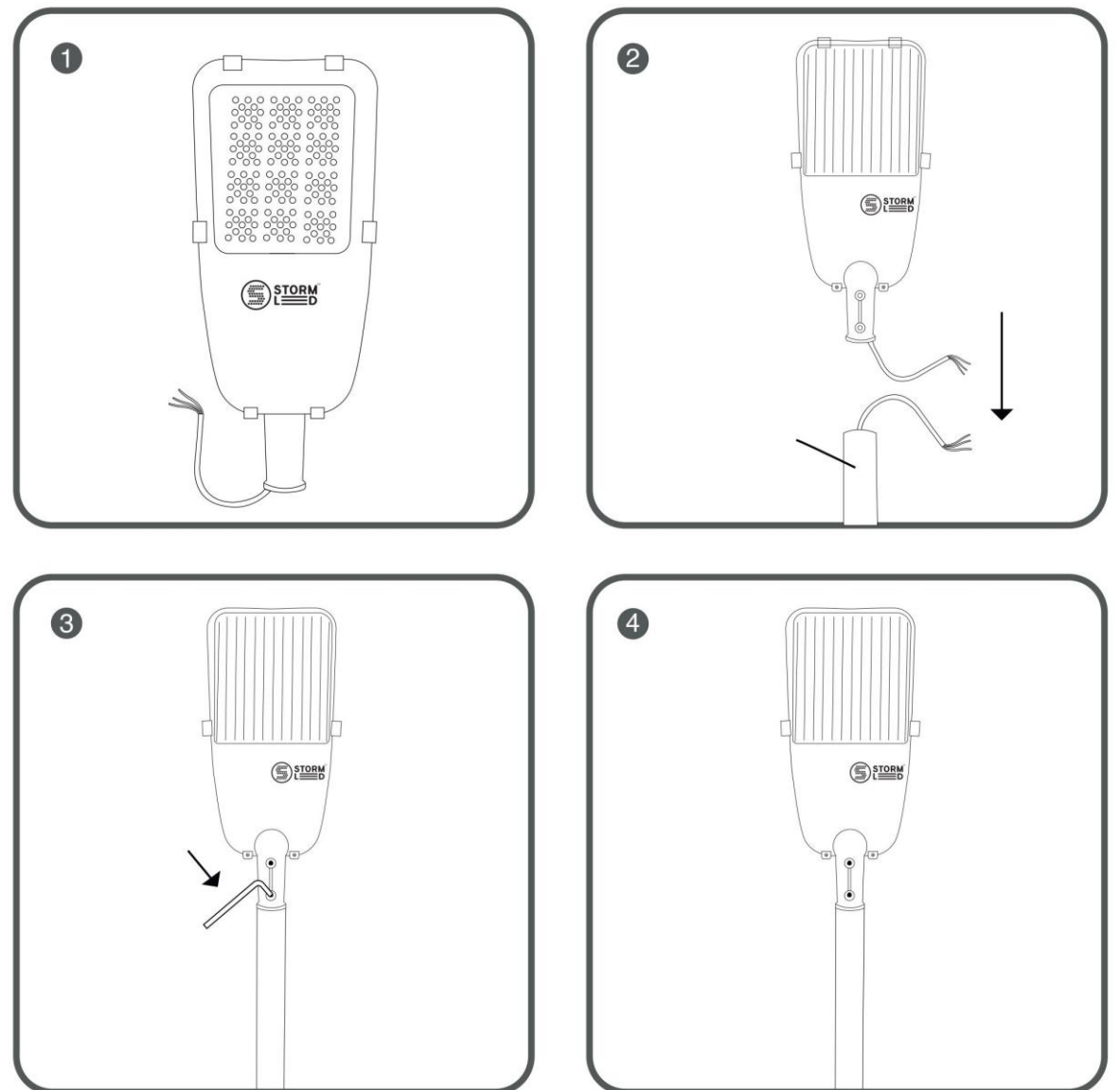
## Installation & Connection Instruction

STEP 1: open the package and check the product, In case of any damage, contact us

STEP 2: connect the lamp with wire from pole (corresponded L, N, GND lines), then insert lamp into the pole according to the arrow direction as shown below.

STEP 3: Tighten the two screws of the bracket as shown below.

STEP4: the installation is completed as shown below.



## CAUTION

- Installation and maintenance must be performed by professionals only.
- Please ensure the pole is strong enough and screws are tightened.
- The ground wire must be securely connected.
- Please make sure the lamp is working with the correct input voltage.

- Cut off the power before maintenance.
- Do not use chemicals or corrosive cleaner to clean the fixture.
- If the external flexible cable or cord of this luminaire is damaged, it shall be exclusively replaced by qualified person in order to avoid a hazard.